

CASE STUDY

Over 50 Alimak vertical access solutions help build new automated metro lines in Paris

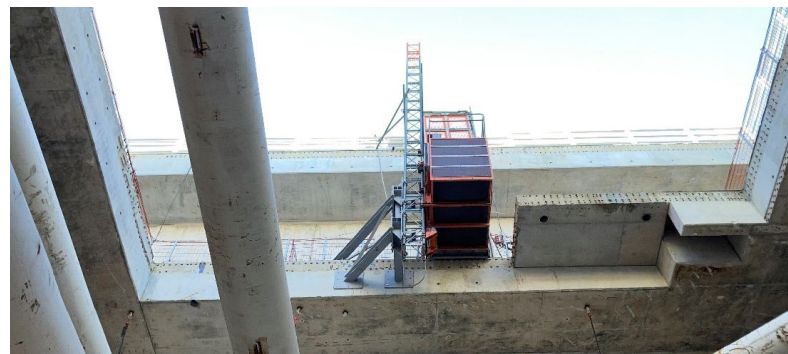
20 Alimak construction hoists and 35 transport platforms improve safety and productivity during construction of Grand Paris Express transit lines.

The Paris Métro is one of the densest metro systems in the world, with 244 stations within the City of Paris. Grand Paris Express is a group of new rapid transit lines being built in the Île-de-France region. Four new métro lines will be built and two existing lines will be extended. A total of 200 kilometres of new track and 68 new stations will be added, serving 2 million passengers per day.

Alimak is currently involved in the construction of métro lines 14, 15, 16 and 18 with over 50 vertical access solutions for the transportation of construction workers and materials.

Alimak proposed installations of construction hoists and transport platforms without bottom frames on the ground. Alimak engineers designed steel structures to support each hoist and transport platform on the wall, without touching the bottom of the tunnel shaft. This allows the equipment to follow the construction progress of the metro tunnels in a flexible way.

The transport platforms were designed with closed cages and have a liaison bridge between the platform itself and the stair tower – which is being used by the construction workers. The project started in 2018 and is expected to continue until 2032.



HOIST DETAILS

Project:	Grand Paris Express
Location:	Metro Line 16 & 18, Paris, France
Application:	Metro Tunnel Construction
Product category:	Construction Hoists
Hoist model:	Alimak Scando 450
No. of hoists:	20
Hoist car size:	1.4 x 2.4 x 2.0 m (W x L x H)
Capacity:	1,200 & 1,100 kg
Speed:	30 m/min
Lifting height:	Varies between: 15 m to 50 m

PLATFORM DETAILS

Project:	Grand Paris Express
Location:	Metro Line 16, Paris, France
Application:	Metro Tunnel Construction
Product category:	Transport Platforms
Platform model:	Alimak TPL 500
No. of platforms:	35
Platform size:	1.4 m x 1.6 m x 2.2 m (W x L x H)
Capacity:	500 kg
Speed:	12 m/min
Lifting height:	Varies between: 15 m to 50 m