

CASE STUDY

10 Alimak mast climbing work platforms at the new DGB office tower in Berlin

Ten Alimak mast climbing work platforms are being used during the construction of a new building block in Berlin, Germany.

The German Trade Union Confederation, Deutscher Gewerkschaftsbund (DGB) is building a new office and commercial building in the Berlin Schöneberg district.

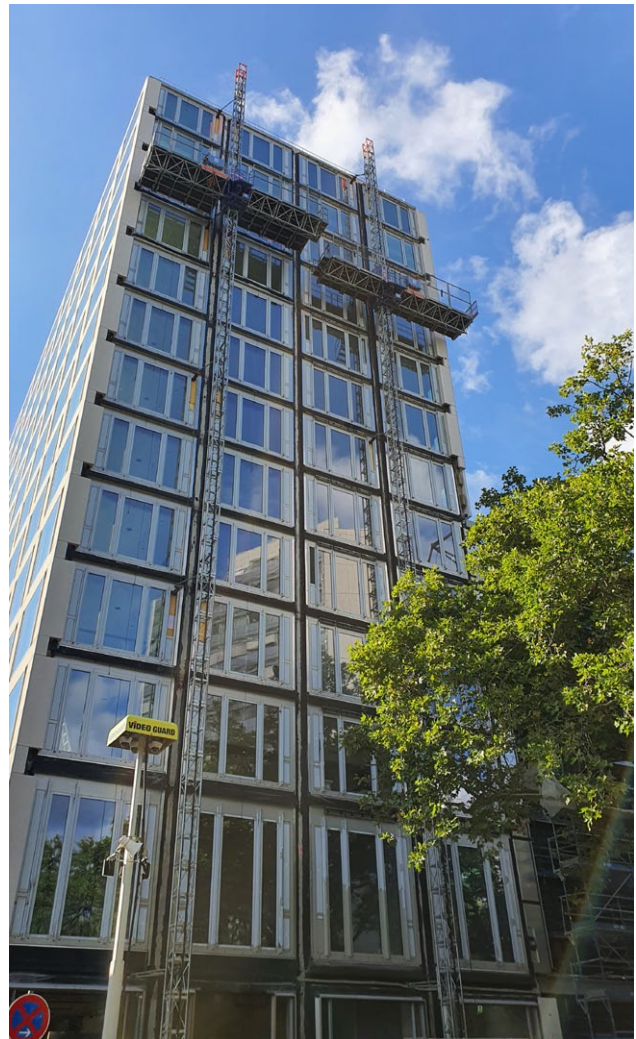
The new office building of approximately 21,000 m² will be used by the federal board administration of the DGB. The new building elements with different heights blend together to create a distinct structure with a unified appearance.

Alimak was approached to supply an efficient vertical access solution for mounting the new façade elements and windows of the DGB building.

Anchoring of the mast towers created a challenge with reconstruction from standard anchoring to special consoles required. Alimak provided a forcible technical solution for the mounting of windows and facade with a total of ten mast climbing work platforms, from its German rental fleet. The project commenced in September 2021 and is ongoing until today.

PLATFORM DETAILS

Project:	DGB – Schöneberg Office Tower
Location:	Schöneberg, Berlin, Germany
Application:	High-rise construction
Product category:	Mast climbing work platforms
Models:	Alimak MC 450 and MSHF
No. of platforms:	10
Platform sizes:	1.2–2.2 x 8.4–28.5 m (W x L)
Capacity:	Up to 2,000 kg
Speed:	7–9 m/min
Lifting height:	Varies between 22–49 m



Ten Alimak mast climbing work platforms at work on the facade of the DGB tower in Berlin, Germany